



Bannermaterial
We recommend
200-280 g
polyester

Promo Version - lightweight roll-up. Cassette of slightly thinner aluminum. Top profile with clamp and tape on the plastic bottom roller makes it easy to mount the banner. When replacing a message new tape must be mounted. Delivered without banner.

Choose between 2 versions in width 85 cm:

Art. 4498 in black standard bag

Art. 4494 in black luxury bag with long zipper.

Promo Version - einseitiger, leichtem Roll-up. Die Kassette ist aus dünnere Aluminium hergestellt. Klemmleiste oben und Klebeband an der Kunststoffrolle ermöglicht eine einfache Montage des Banners. Beim Austausch des Banners muss neues Klebeband montiert werden. Wird ohne Banner geliefert.

Erhältlich in 2 Versionen in Breite 85 cm:

Art. 4498 in Standard Tasche.

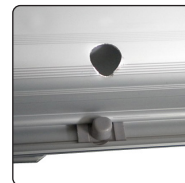
Art. 4494 in Luxus Tasche mit Reißverschluss auf der Längsseite.

Kampagnemodell - letvægts roll-up med kassette fremstillet af lidt tyndere aluminium. Topprofil med klemmleiste, samt tape på plast bundrulle gør det let at montere banneret. Ved udskiftning af budskab skal ny tape monteres. Leveres uden banner.

Vælg mellem 2 versioner i 85 cm bredde:

Art. 4498 i sort standard taske.

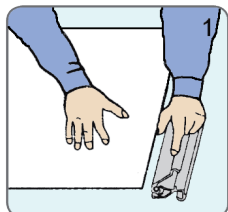
Art. 4494 i sort luksus taske med lynlås på langs.



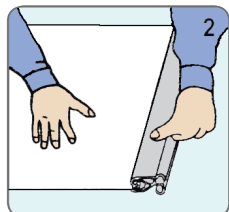
Black standard bag for both 60, 80 and 85 cm roll-up



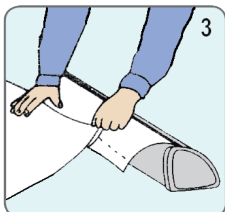
Black bag with long zipper comes with art. 4494



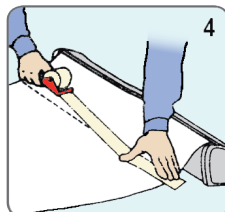
Open the snap clip, insert the top of the graphic into the gap, make the graphic flat.



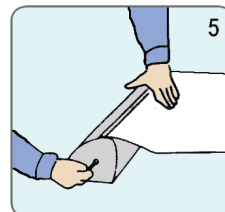
Close the snap clip.



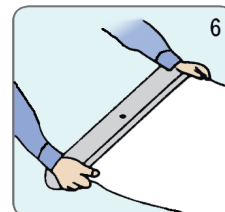
Take the protective film of the adhesive tape. Place the graphic evenly on the leading paper. Use the line as a guideline.



Put adhesive tape on the back of the graphic and on the leading paper, in order to secure the graphic to the leading paper.



Hold the graphic and the roll-up body with one hand tight. Take out the pin at the side while you still hold the graphic, to avoid that graphic suddenly roll into the body too fast.



Make the graphic scroll slowly into the roll-up body by hand.

Installation instruction

Model	Article	Banner size	Visible Banner	Bag	Colour	Total W x H	Package size and weight	Pallet size and quantity
300	4496	60 x 220 cm	60 x 200 cm	Standard	Alu/silver	62 x 212 cm	12 x 65 x 12 cm 1,9 kg	80 x 120 x 220 cm 156 pcs.
300	4497	80 x 220 cm	80 x 200 cm	Standard	Alu/silver	82 x 212 cm	12 x 85 x 12 cm 2,2 kg	80 x 120 x 220 cm 132 pcs.
300	4498	85 x 220 cm	85 x 200 cm	Standard	Alu/silver	87 x 212 cm	12 x 90 x 12 cm 2,3 kg	80 x 120 x 220 cm 120 pcs.
300	4494	85 x 220 cm	85 x 200 cm	With long zipper	Alu/silver	87 x 212 cm	12 x 90 x 12 cm 2,3 kg	80 x 120 x 220 cm 120 pcs.