




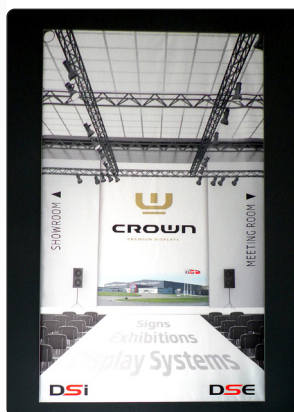
LED Banner Frame



 34 mm deep backlit LED aluminum frame for textiles. A silicone band must be sewn or glued on the four sides of the banner and then mounted into the frame. The laser treated acrylic back plate ensures a strong and steady light. Supplied with on/off switch, adapter and 3,5 m of cable. Fittings for hanging, screws and plugs incl. Excl. Banner and silicone band. Only for indoor use.

 34 mm tiefer Alu-Rahmen für Banner mit LED-Licht. Das Banner wird auf einem Silikon-Band genäht oder geklebt, und dann in den Rahmen eingespannt. Die laser-behandelte Rückplatte in Acryl, sorgt für ein starkes Dauerlicht. Geliefert mit on/off-Schalter, Adaptor und 3,5 M Kabel. Einschliesslich Halterungen, Schrauben und Dübel. Wird ohne Banner und Silikon-Band geliefert. Nur für den Innenbereich.

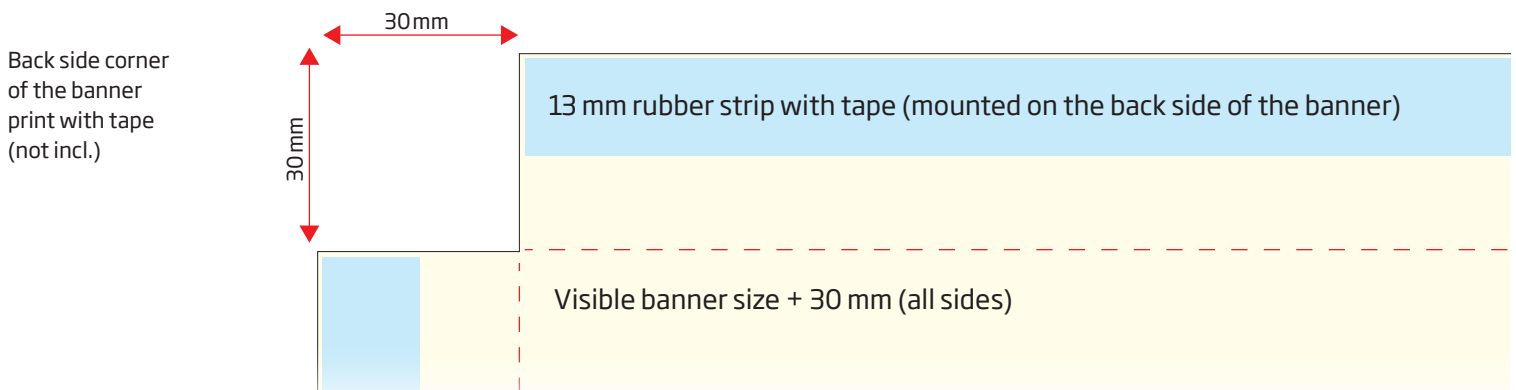
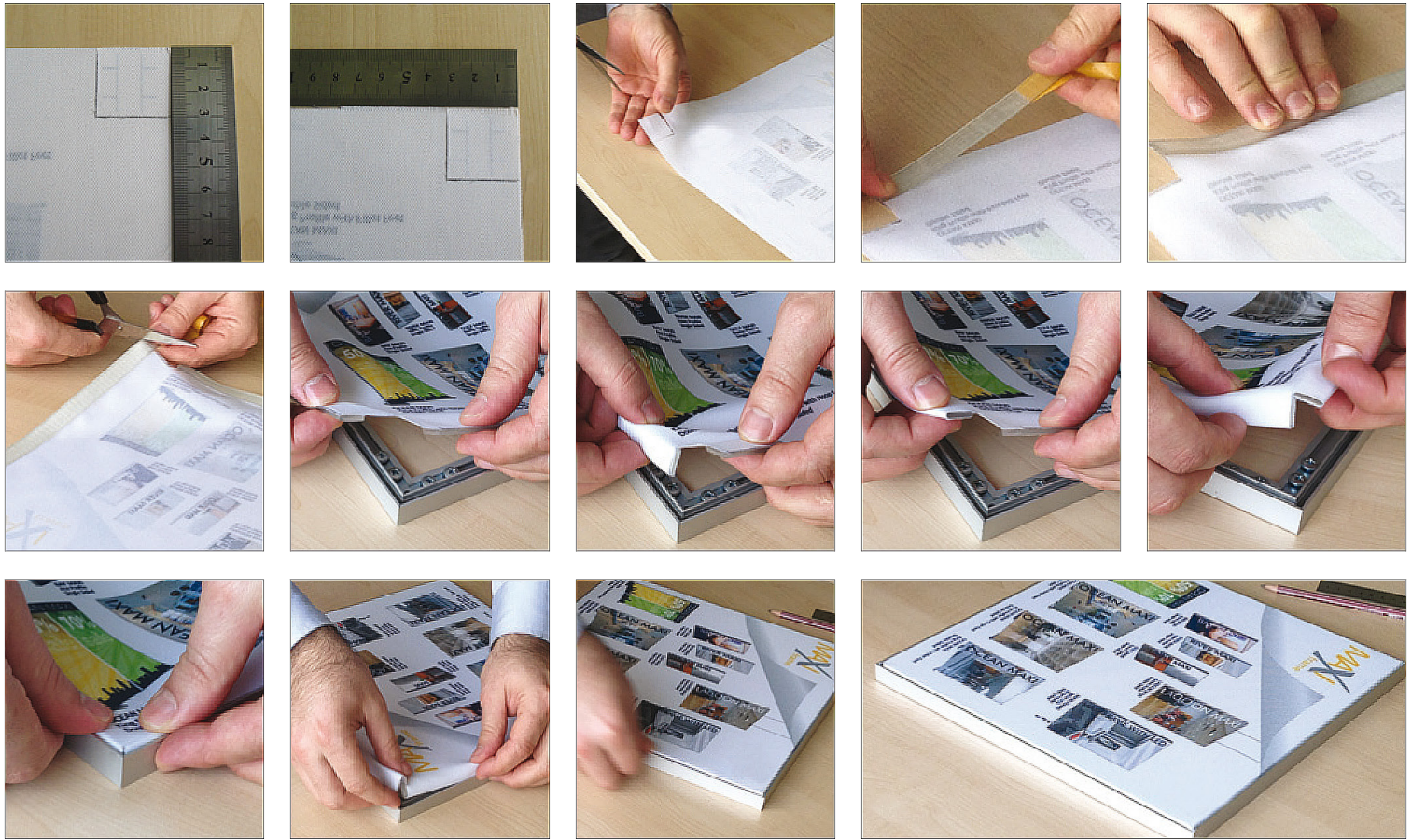
 34 mm dyb aluramme til banner med LED lys. Langs alle bannerets fire kanter syes eller klæbes et silikonebånd, for derefter at skubbe silikonebåndet og banner ind i rammen. Den laserbehandlede akryl-bagplade, sørger for et kraftigt og jævnt lys. Leveres med tænd/sluk knap, samt adaptor og 3,5 m ledning. Leveres med beslag til ophæng, skruer og plugs. Kun til indendørs brug. Leveres uden banner og silikonebånd.



Model	Article	Poster size	Visible part	Color	Power	Depth	Package size and weight	Pallet size and quantity
518	4180	70 x 100 cm	69,2 x 99,2 cm	Alu	31 W	3,4 cm	72 x 108 x 4 cm 5,1 kg	80 x 120 x 220 cm 56 pcs.

Mounting the rubber strip (silicone band) to the banner with **double sided tape**

There have been many requests for easy and sewing-free mounting of the print to the rubber strip. We redesigned the existing product by adding the possibility of mounting the rubber strip with double sided tape (not incl.).



Mounting the rubber strip (silicone band) to the banner **by sewing**

Back side corner of the banner print with sewing

