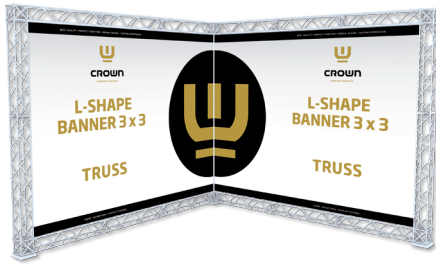


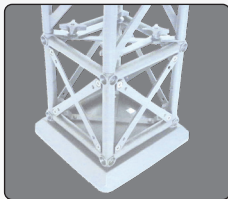
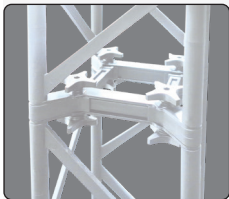
10 or 15 cm modules - black or white



A strong and stable wall with three feet, incl. clips and aluminum profiles for banner mounting. Spots are optional. Can be used as double sided by ordering extra clips + aluminum profiles for the extra banners. Delivered without banner.

Eine starke und stabile Messewand mit drei FüÙe, inklusive Clips und Alu-Profile für die Bannermontierung. Strahler sind optional. Kann mit extra Clips + Alu-Profile für die extra Banner als doppelseitig verwendet werden. Wird ohne Banner geliefert.

En stærk og stabil væg med tre fødder, inkl. klips og aluprofiler til bannermontering. Spots er tilbehør. Kan bruges som dobbeltsidet ved tilkøb af klips + aluprofiler til ophæng af ekstra banner. Leveres uden banner.



Optional spot  
art. 1543



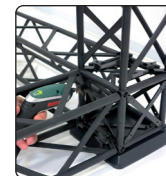
Optional powerspot  
art. 1548



Truss 10 with 1 connection point  
Truss 15 with 4 connection points



Corner blocks  
10 & 15 cm



Regular bases



Truss 15 can be folded



Truss 15 can be folded



Banner with top clip



Connector cross  
10 & 15 cm



Optional transport flight case - art. 9961/9962



Optional brochure holders



LOWER PART:

15 x 15  
modules  
measures

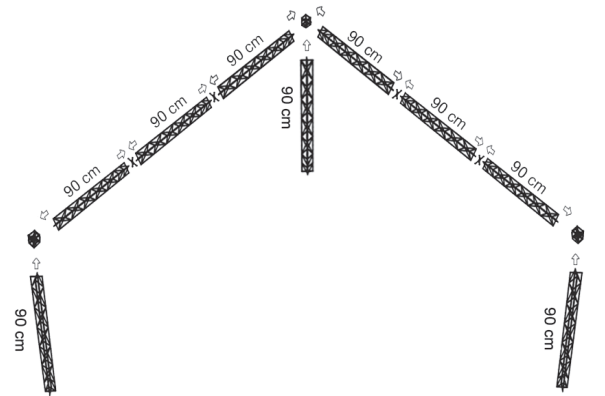
- 6 x
- 3 x
- 3 x
- 7 x



1

UPPER PART:

- 9 x
- 3 x
- 4 x

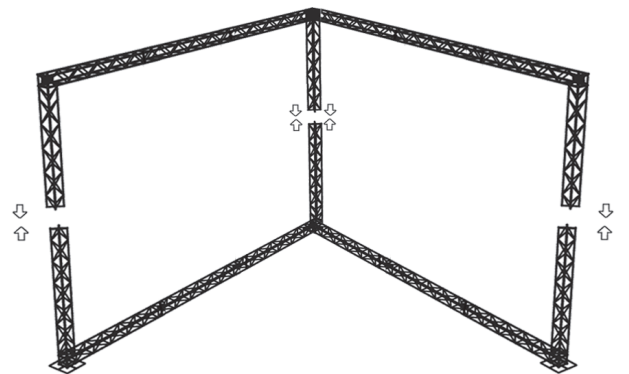


2

ASSEMBLY:

Install Banners at upper part.

Mount upper part on top of lower part.



3

Model	Article	Product	Modules	Color	Print size	Total W x H x D	Weight
668	1168	Truss 10 L-shape wall	10 x 10 cm	Black	2 pcs. 242 x 201 cm	262 x 224 x 262 cm	28,5 kg
688	1168w	Truss 10 L-shape wall	10 x 10 cm	White	2 pcs. 242 x 201 cm	262 x 224 x 262 cm	28,5 kg
768	1768	Truss 15 L-shape wall	15 x 15 cm	Black	2 pcs. 273 x 212 cm	307 x 246 x 307 cm	52,0 kg
788	1768w	Truss 15 L-shape wall	15 x 15 cm	White	2 pcs. 273 x 212 cm	307 x 246 x 307 cm	52,0 kg