

 Black or white counters in Truss15 system - with legs, bases and MDF top plate - 98 cm height. Profiles and clips for banner incl. Foldable construction - very easy to assemble and disassemble. Can be used with or without banner.

 Schwarzer oder weisser Messtisch in Truss 15 System. Mit Beinen, Füßen und MDF-Tischplatte. 98 cm Hoch. Inkl. Top- & Bodenclips samt Alu-Profilen mit doppelseitigem Klebeband für eine Bannerbefestigung. Die Module sind faltbare, und sehr einfach zu montieren und aufzustellen. Kann auch ohne Banner aufgestellt werden.

 Sort eller hvid messedisk i Truss 15 system - med ben, fødder og MDF bordplade - 98 cm høj. Leveres med dobbeltklæbende aluprofiler, samt klips til bannermontering. Modulerne er sammenklæpelige konstrueret - lette at samle og afmontere. Kan anvendes med eller uden banner. Leveres uden banner.

Supplied complete with:

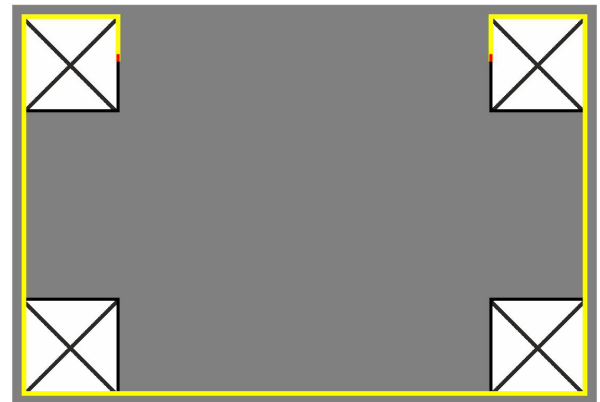
- MDF top plate 95 / 125 x 65 cm
- 4 stk. 90 cm modules
- 4 stk. connector cross
- 4 stk. regular base
- 2 stk. alu lists 90 cm
- 6 stk. bottom clips (with rubber band).

Banner size:

- Width 267 / 297 cm
- Height 90 cm
- (not incl.)

Banner mounting:

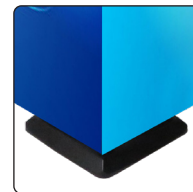
- Mount the banner vertical with alu lists at start and end and click on with bottom clips



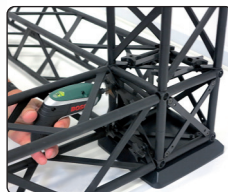
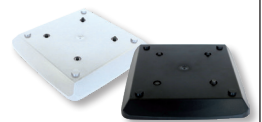
Optional Bosch IXO screw driver model 747



Optional for Bosch IXO



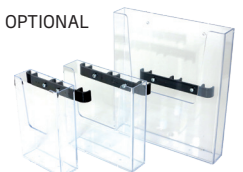
Regular bases



Optional transport flight case - art. 9961 / 9962



OPTIONAL



Model	Article	Product	Modules	Color	Size top plate	Total W x H x D	Weight
757	1757	Rectangle counter	15 x 15 cm	Black	95 x 65 x 2 cm	95 x 98 x 65 cm	18,6 kg
757	1758	Rectangle counter	15 x 15 cm	Black	125 x 65 x 2 cm	125 x 98 x 65 cm	21,2 kg
777	1757w	Rectangle counter	15 x 15 cm	White	95 x 65 x 2 cm	95 x 98 x 65 cm	18,6 kg
777	1758w	Rectangle counter	15 x 15 cm	White	125 x 65 x 2 cm	125 x 98 x 65 cm	21,2 kg



Banner size: The banner size for CROWN Truss must have the same size as the inner measure between the modules. Approx. 3 cm in top and bottom of the banner must be wrapped around the alu profile and are thus not visible. The alu profile is mounted with tape.

Bannermaße: Banner Größe für CROWN Truss muß das selbe als den Innenmaßen schwi-schen die Module sein. Etwa 3 cm vom Banner oben und unten wird um die Aluleiste gewickelt und ist hiermit nicht sichtbar. Die Aluleiste ist mit Klebeband montiert.

Bannermål: Bannermål til CROWN Truss skal være det samme som det indvendige mål på din opstilling. Ca. 3 cm i top og bund af banneret vikles rundt om alulisten, og bliver dermed ikke synligt. Alulisten er monteret med tape.

Banner material:

We recommend
250-320 g
polyester
or similar

Mounting of banner
on alu profile with tape



Top clip: 3 pcs. per banner metre

Aluprofile 3 x 12 mm (x length) with tape ▼



Banner height: Measure between modules

Banner width: Measure between modules

Visible banner height: Measure between modules + 6 cm

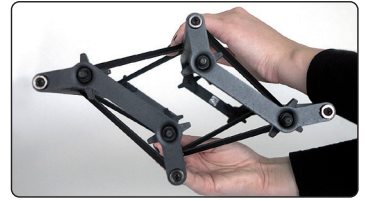


Bottom clip: 3 pcs. per banner meter



15 x 15 cm modules

- A modular truss system 15 x 15 cm made in strong and durable materials - aluminum, steel and composite.
- Black or white
- 4 screws for connecting
- The modules can be folded so that they do not take up much space during transport or storage



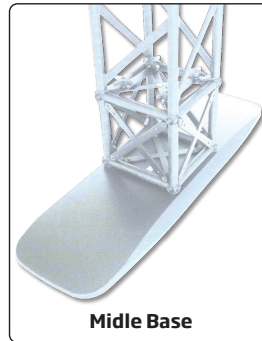
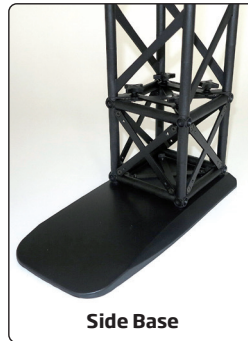
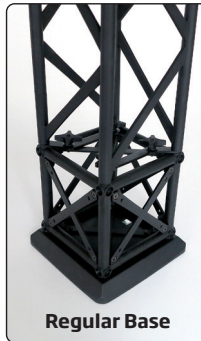
10 x 10 cm modules

- A modular truss system 10 x 10 cm made in strong and durable materials - aluminum, steel and composite.
- Black or white
- 1 screw for connecting - for faster assembly
- Not foldable



Black bases

- Choose between 3 different bases for 10 cm or 15 cm modules for indoor use
- Outdoor base for 15 cm modules only

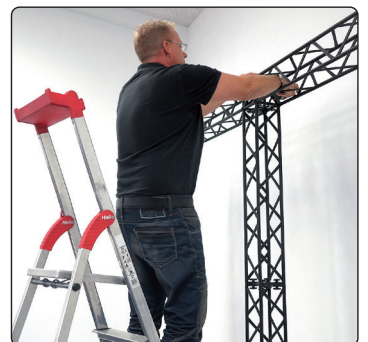
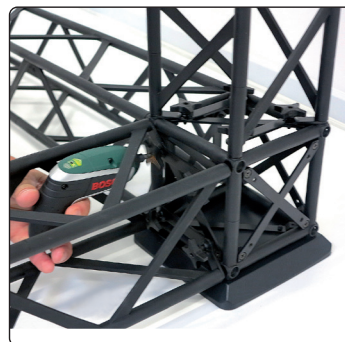


White bases

- Choose between 3 different bases for 10 cm or 15 cm modules for indoor use

Mounting

- Very easy to assemble and disassemble
- Use a small Bosch IXO screwdriver (or similar)



Banner & accessories

- Mount the banner on the aluminum profile with tape (incl.) and roll it once or twice
- Attach the top- and bottom clips to the profile with banner and hang it on the stand
- Finally mount the accessories

