

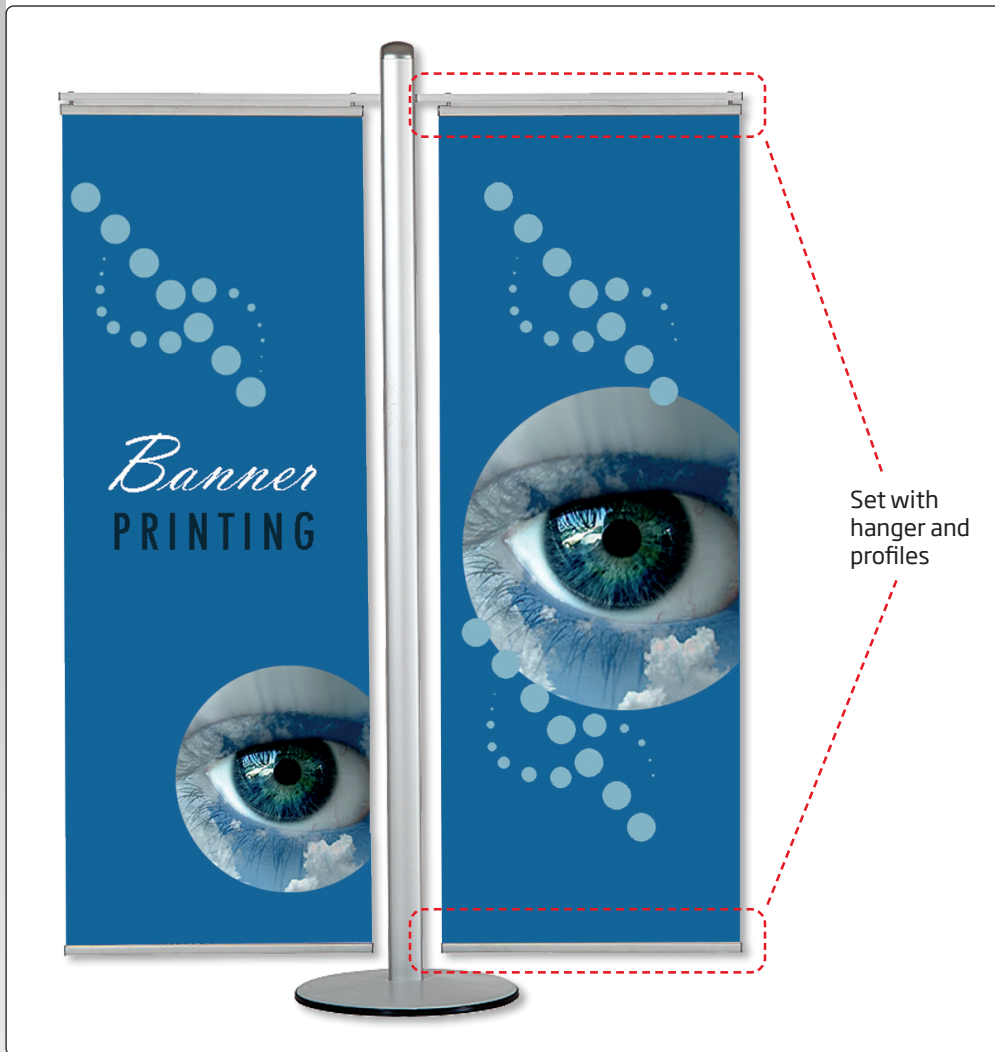
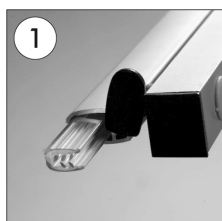
 Anodized alu profile to be attached in top. Delivered with hangers and profiles for top and bottom.

 Eloxiertes Aluminium Aufhängeprofil. Wird im Topprofil aufgehängt. Inkl. Top- und Boden- profil und Befestigungsmaterial.

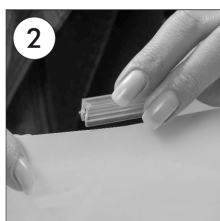
 Eloxeret alu ophængsprofil, som fastgøres i top. Leveres med ophæng og profiler til top og bund.



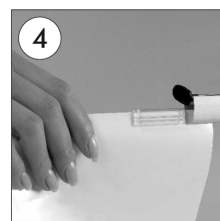
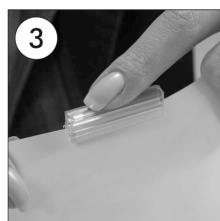
Set with hanger and profiles



- Slide off the PVC profiles after turning the end caps.
- Die Endkappen der Poster profile abnehmen und PVC profil herausziehen.



- Slide the PVC profiles through the top & bottom sides of the poster.
- PVC profile in gleichen Abständen an die oberen und unteren seiten aubringen.



- Slide the poster through the all profile.
- Das Poster dann in das profil hineinstecken.



- Close the end caps of all profile.
- Die Endkappen anbringen.



- Slide the square profile notch through the channel of the pole.
- Den Zahn am Vierkantprofil in den Kanal am Mast hineinstecken.



- Fix the banner box profile on desired position on the pole by allen key.
- In der Wunschhöhe mit Inbusschlüssel festziehen.

Model	Art. no.	Banner width	Banner height	Colour	Package size and weight	Pallet size and quantity
965	2894	40 cm	Up to 180 cm	Alu/silver	23 x 46 x 12 cm 0,6 kg	80 x 120 x 130 cm 1200 pcs.
965	2895	50 cm	Up to 180 cm	Alu/silver	23 x 56 x 12 cm 0,7 kg	80 x 120 x 130 cm 960 pcs.
965	2896	60 cm	Up to 180 cm	Alu/silver	23 x 66 x 12 cm 0,8 kg	80 x 120 x 130 cm 800 pcs.
965	2897	70 cm	Up to 180 cm	Alu/silver	23 x 76 x 12 cm 0,8 kg	80 x 120 x 130 cm 800 pcs.