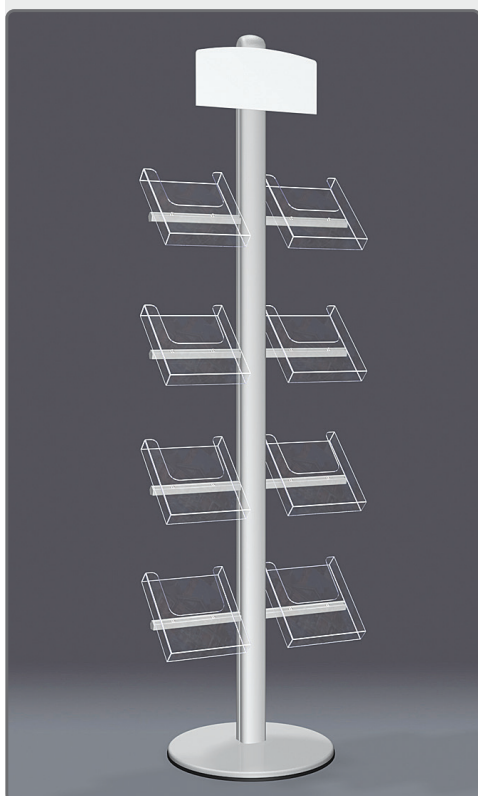
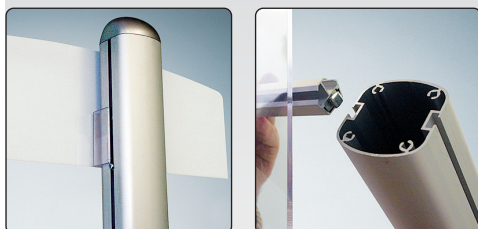




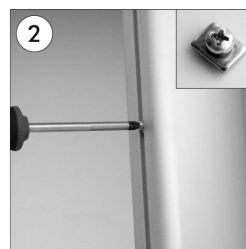
🇬🇧 Logo plate in white acryl for side mounting on Multi Stand. Incl. fitting for mounting. Can not be mounted on the Mini Multi Stand.

🇩🇪 Logoplatte in weissem Acryl für Seitenmontage auf Multi Stand Ständer. Inkl. Beschlag. Nicht für Mini Multi Stand geeignet.

🇩🇰 Logoplade i hvid akryl til sidemontage på Multi Stand stander. Inkl. beslag. Kan ikke monteres på Mini-Multi Stand!



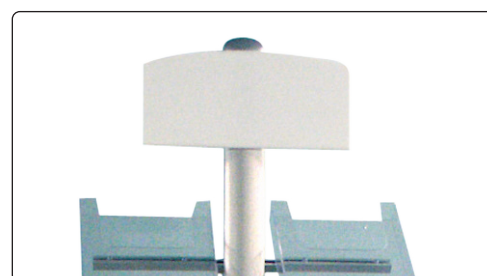
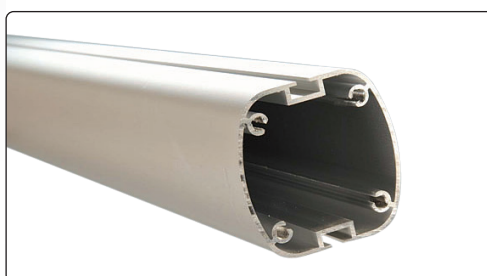
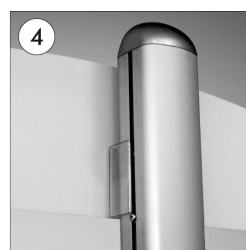
- Remove the pole cap.
- Die Endkappe abnehmen.



- Slide the nut&screw through the pole channel tighten the screw at desired height. This screws is for header placement.
- Die mit Mutter zusammen befindliche Schraube in dem Kanal stechen und in entsprechender Höhe befestigen.



- Insert the header's backing extension into the pole channel above the screw. Put the pole cap back.
- Logohalterung bis auf die festgezogene Schraube mit Mutter durch stechen und die Endkappe daraufsetzen.



Model	Article	Logo plate	Colour	Package size and weight
967	2882	45 x 16 cm	White	46 x 18 x 2 cm 0,8 kg