

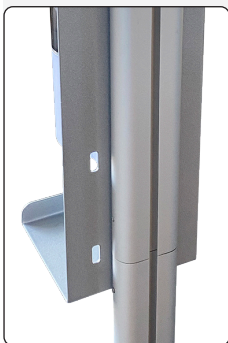
 Drip tray made of 2 mm white acrylic. For placement under dispenser for hand sanitizer - to collect excess alcohol.

 Tropfschale aus 2 mm weißem Acryl. Zur Platzierung unter einem Spender für Desinfektionsmittel, um überschüssiges Desinfektionsmittel aufzufangen.

 Drypbakke fremstillet i 2 mm hvid akryl. Til placering under spritdispenser til opsamling af overskydende sprit.



| Model | Article | Size | Colour | Package size and weight | Pallet size and quantity |
|-------|---------|------------------|--------|-------------------------|--------------------------|
| 975 | 1947 | 15 x 2,2 x 10 cm | White | | |